



PR Antsla esindusväljak

Content

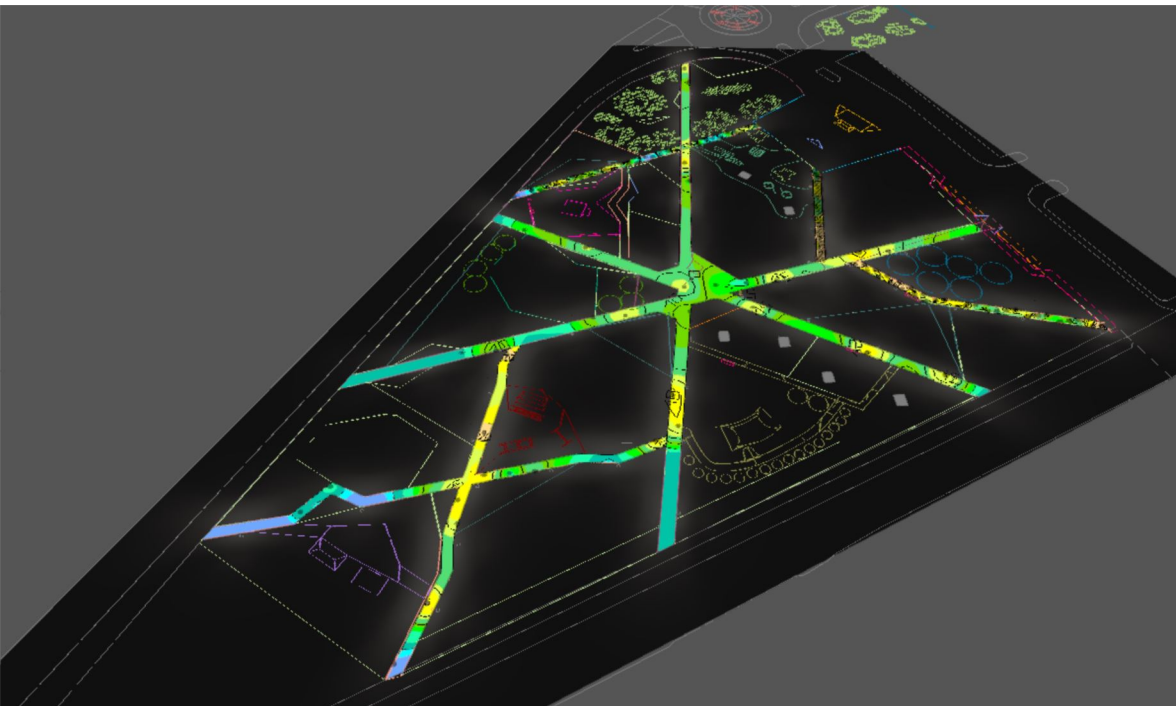
Cover page	1
Content	2
Description	3
Luminaire list	4

Product data sheets

Keha3 - K3 Triangle 830 350mA (1x 14 x XP-G3)	5
---	---

Site 1

Calculation objects / Light scene 1	6
Rist - väike / Light scene 1 / Perpendicular illuminance	8
Rist - suur / Light scene 1 / Perpendicular illuminance	9
Rada - kagu / Light scene 1 / Perpendicular illuminance	10
Rada - ida / Light scene 1 / Perpendicular illuminance	11
Rada - põhj / Light scene 1 / Perpendicular illuminance	12



Description

Antsla esindusväljaku valgusarvutus Keha3 OÜ välivalgustitega
"Triangle (LO-TR-01) 4m mastidel.

Tellijä

Diederik Kales

KEHA3 OÜ

Telliskivi 60a/5

T +372 58150095

diederik@keha3.ee

Läbiviija

Sander Vislapuu

Draftes OÜ

Kentmanni 9-3

T +372 56627237

sander@draftes.com

Luminaire list

 Φ_{total}

68596 lm

 P_{total}

770.0 W

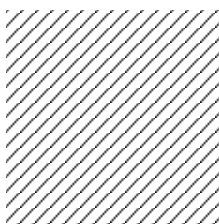
Luminous efficacy

89.1 lm/W

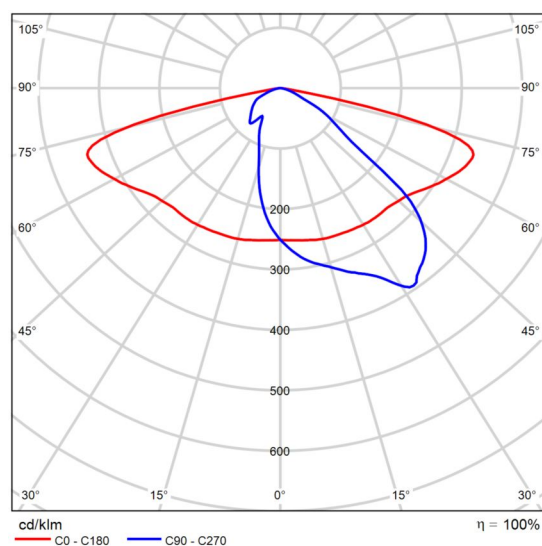
pcs.	Manufacturer	Article No.	Article name	P	Φ	Luminous efficacy
44	Keha3	LO-TR-01 350mA	K3 Triangle 830 350mA	17.5 W	1559 lm	89.1 lm/W

Product data sheet

Keha3 - K3 Triangle 830 350mA



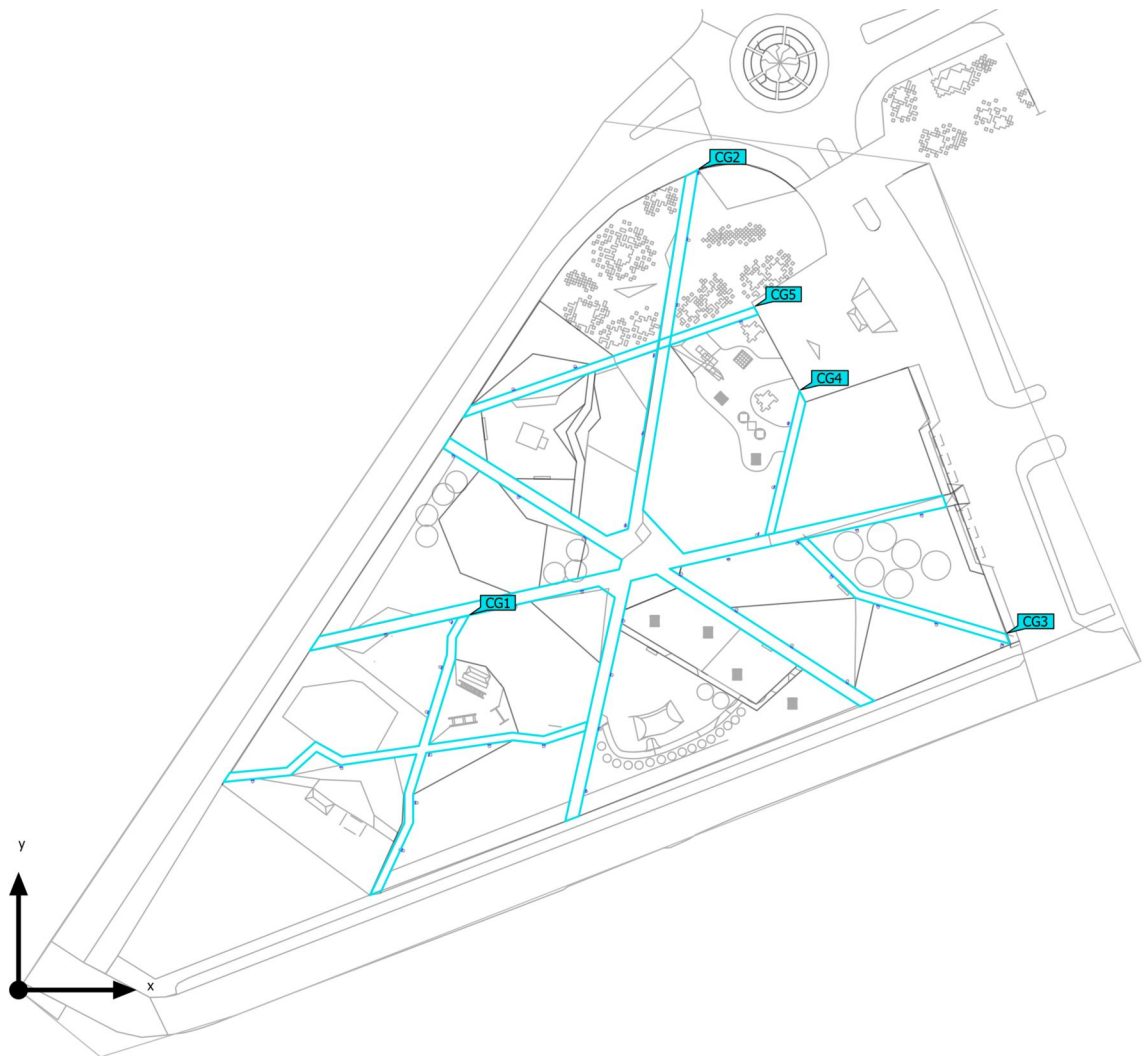
Article No.	LO-TR-01 350mA
P	17.5 W
Φ_{Lamp}	1559 lm
$\Phi_{\text{Luminaire}}$	1559 lm
η	100.00 %
Luminous efficacy	89.1 lm/W
CCT	3127 K
CRI	84



Polar LDC

Site 1 (Light scene 1)

Calculation objects



Site 1 (Light scene 1)

Calculation objects

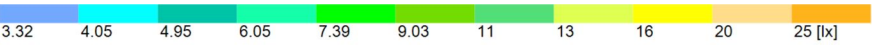
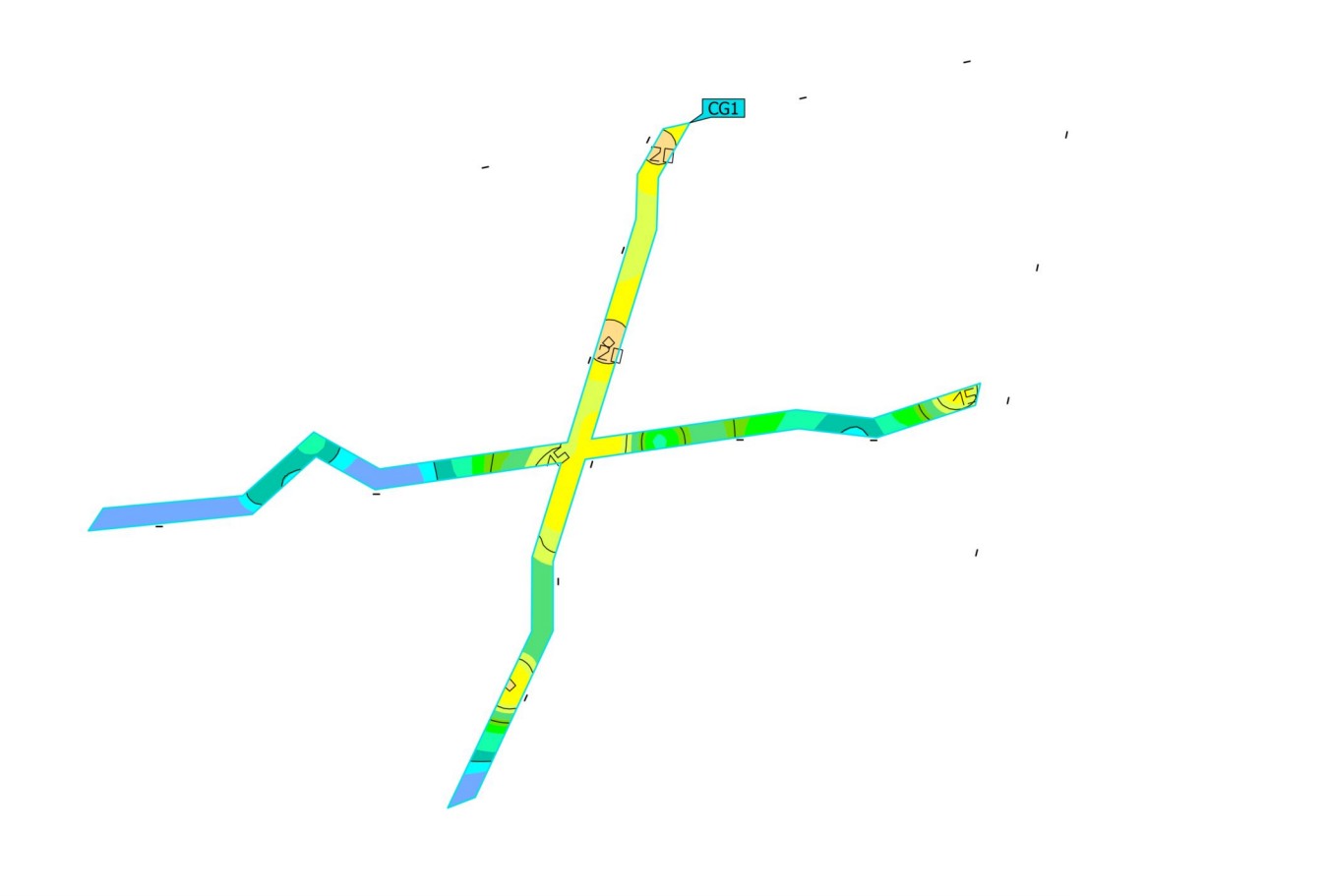
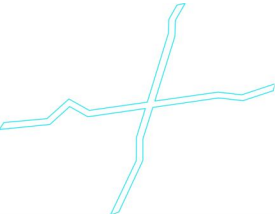
Calculation surfaces

Properties	\bar{E}	E_{min}	E_{max}	g_1	g_2	Index
Rist - väike Perpendicular illuminance Height: 0.000 m	14.3 lx	3.63 lx	22.8 lx	0.25	0.16	CG1
Rist - suur Perpendicular illuminance Height: 0.000 m	13.1 lx	5.76 lx	18.5 lx	0.44	0.31	CG2
Rada - kagu Perpendicular illuminance Height: 0.000 m	16.9 lx	7.88 lx	22.7 lx	0.47	0.35	CG3
Rada - ida Perpendicular illuminance Height: 0.000 m	16.9 lx	5.81 lx	24.0 lx	0.34	0.24	CG4
Rada - põhi Perpendicular illuminance Height: 0.000 m	10.6 lx	2.93 lx	18.3 lx	0.28	0.16	CG5

Utilisation profile: DIALux presetting, Standard (outdoor transportation area)

Site 1 (Light scene 1)

Rist - väike

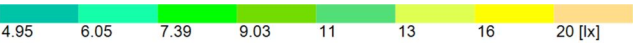
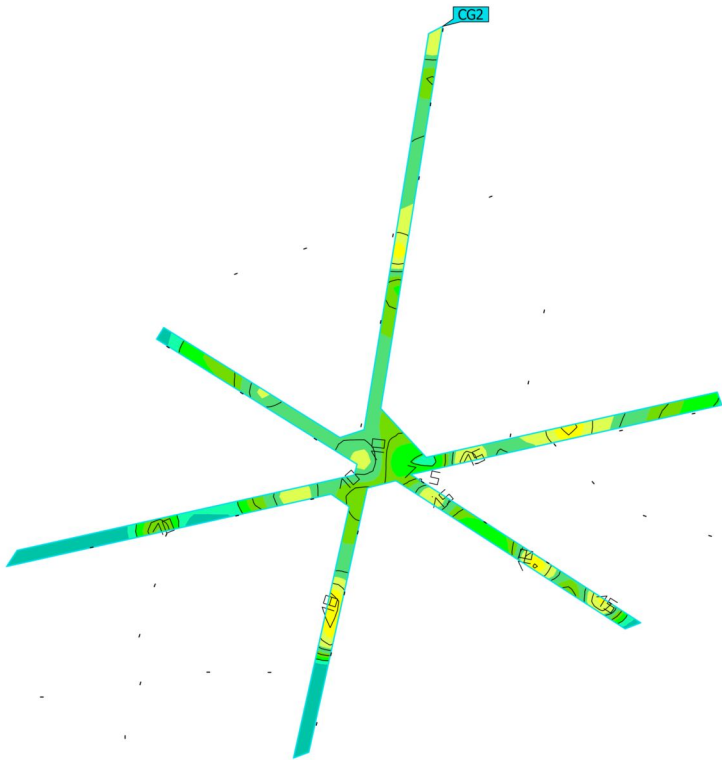
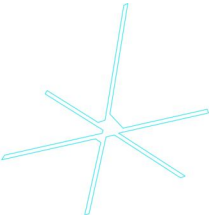


Properties	\bar{E}	E_{min}	E_{max}	g_1	g_2	Index
Rist - väike Perpendicular illuminance Height: 0.000 m	14.3 lx	3.63 lx	22.8 lx	0.25	0.16	CG1

Utilisation profile: DIALux presetting, Standard (outdoor transportation area)

Site 1 (Light scene 1)

Rist - suur

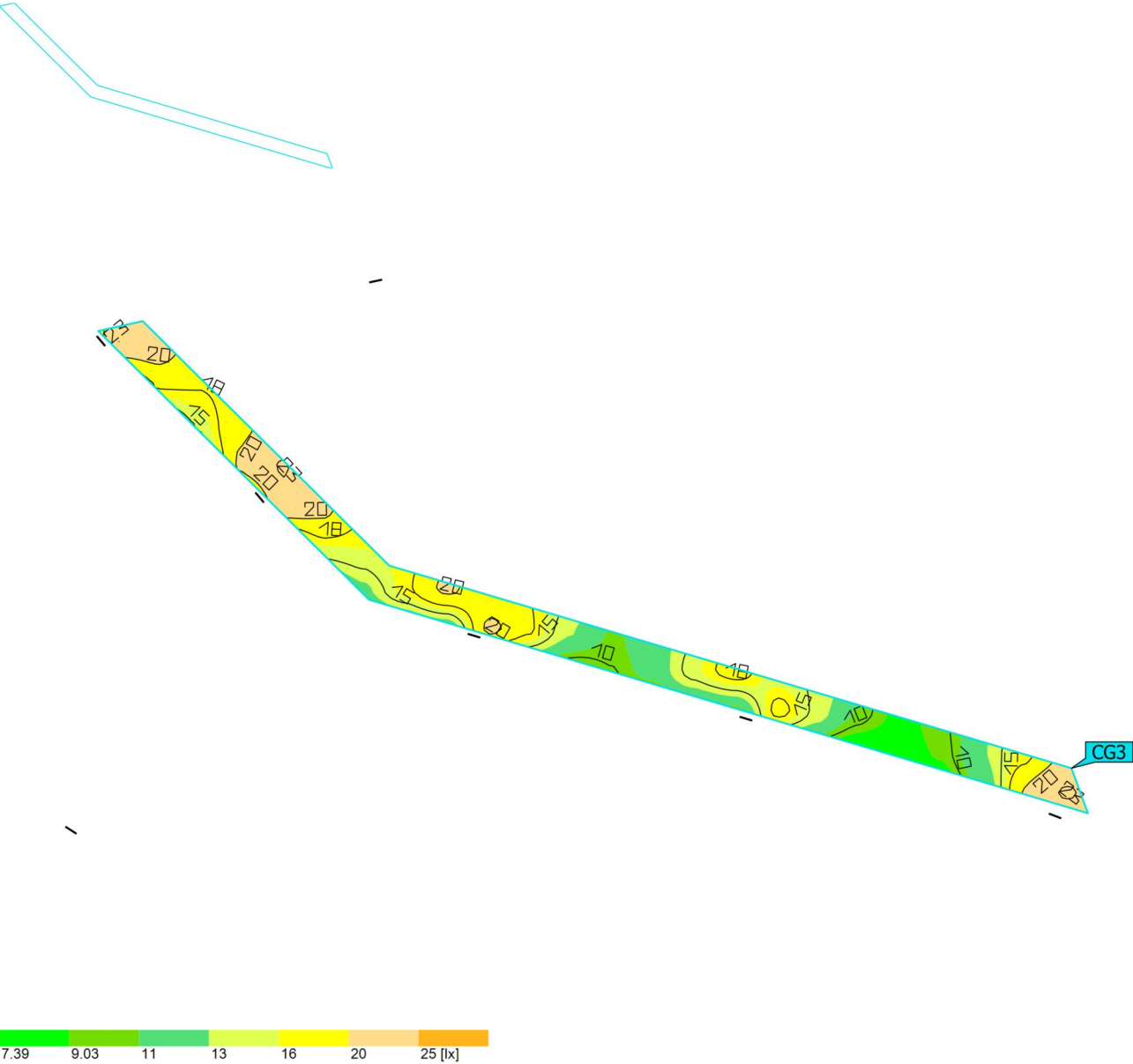


Properties	\bar{E}	E_{min}	E_{max}	g_1	g_2	Index
Rist - suur	13.1 lx	5.76 lx	18.5 lx	0.44	0.31	CG2
Perpendicular illuminance						
Height: 0.000 m						

Utilisation profile: DIALux presetting, Standard (outdoor transportation area)

Site 1 (Light scene 1)

Rada - kagu

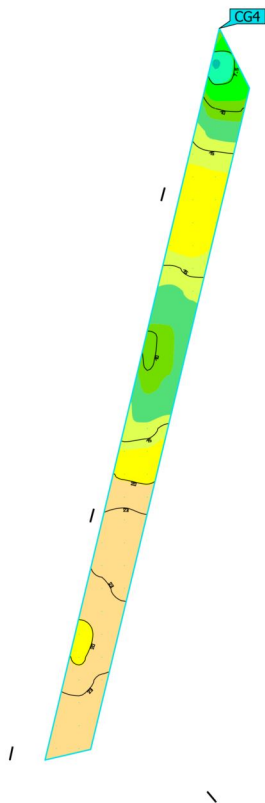


Properties	\bar{E}	E_{min}	E_{max}	g_1	g_2	Index
Rada - kagu	16.9 lx	7.88 lx	22.7 lx	0.47	0.35	CG3
Perpendicular illuminance						
Height: 0.000 m						

Utilisation profile: DIALux presetting, Standard (outdoor transportation area)

Site 1 (Light scene 1)

Rada - ida

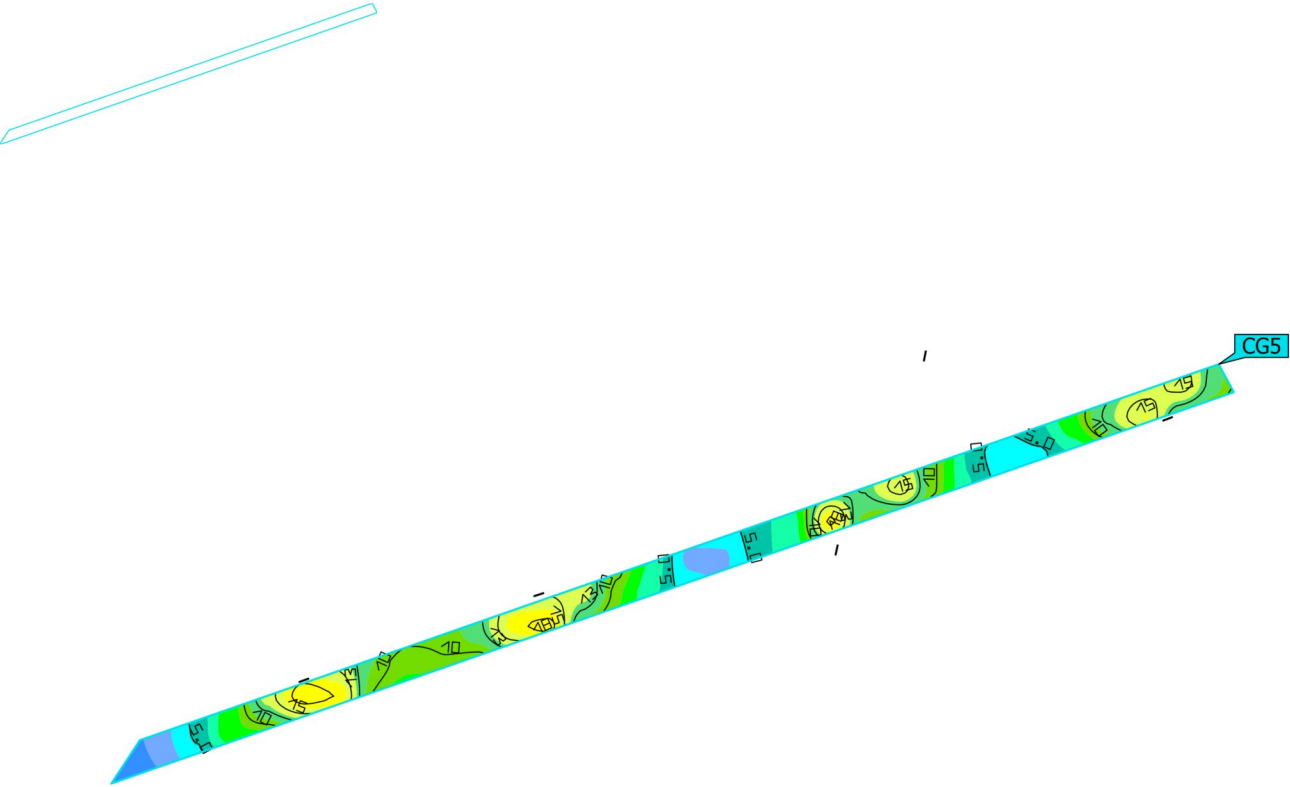


Properties	\bar{E}	E_{min}	E_{max}	g_1	g_2	Index
Rada - ida Perpendicular illuminance Height: 0.000 m	16.9 lx	5.81 lx	24.0 lx	0.34	0.24	CG4

Utilisation profile: DIALux presetting, Standard (outdoor transportation area)

Site 1 (Light scene 1)

Rada -põhi



Properties	\bar{E}	E_{min}	E_{max}	g_1	g_2	Index
Rada -põhi Perpendicular illuminance Height: 0.000 m	10.6 lx	2.93 lx	18.3 lx	0.28	0.16	CG5

Utilisation profile: DIALux presetting, Standard (outdoor transportation area)